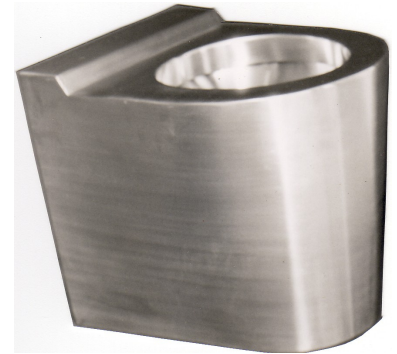


WALLFACE P TRAP PAN

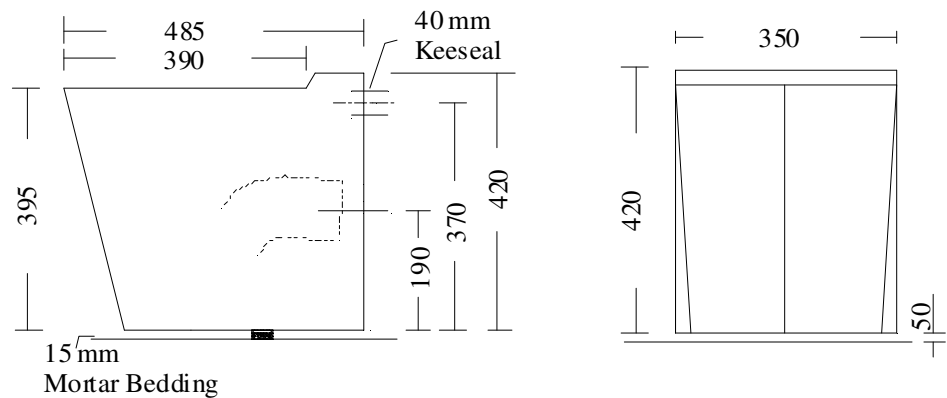
MODEL NO: STTP
PRODUCT CODE: TP2003

Full flush open rim type 304 satin finish stainless steel water closet pan, with 40mm keeseal rear entry flushpipe connection.



Featuring:

- Mid or High level operation.
- Extra body strength, generally 2mm thick
- Vandal resistance. Particularly suited for installation in such vandal prone situations as prisons, hospitals, institutions and public conveniences.



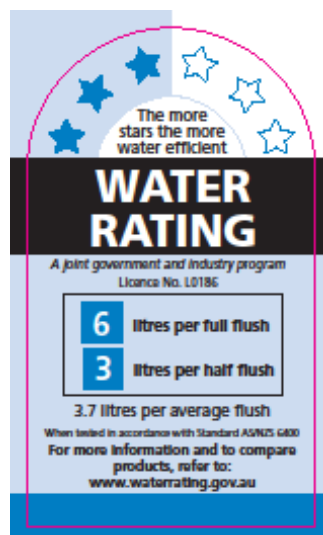
Fix securing bracket to floor with two off 10mm OD C'SK D.D dynabolts as indicated in central position, slide pan onto bracket, seal to wall and floor as required.

For disabled use add 50mm to all vertical dimensions



STANDARDS AUSTRALIA
 LIC. 0585
 PAN CAP. 6L/3L
 MATCHING CISTERN
 WATER WAFER
 DUAL FLUSH

WELS registration
 number L03329




SOUTHERN CROSS
 LASER & SHEET METAL

23-27 Clapham Road
Regents Park NSW 2143

Ph: 02 9644 2811
Email office@sclaser.org