

WALLFACE STRAP PAN

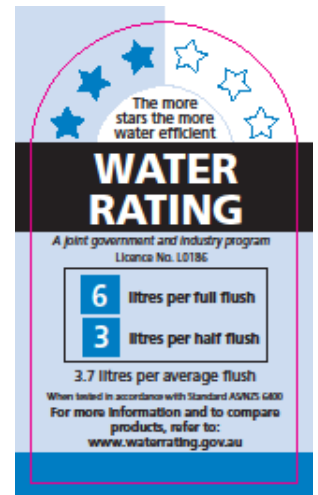
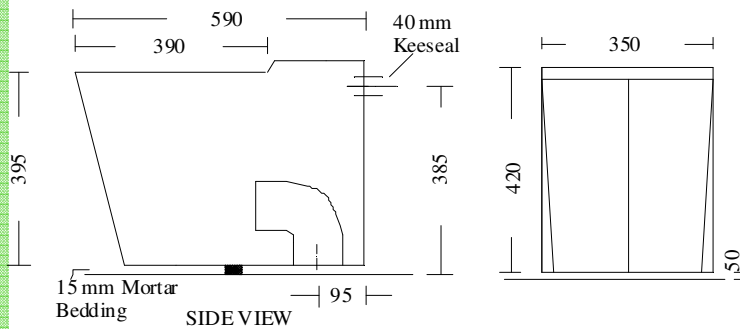
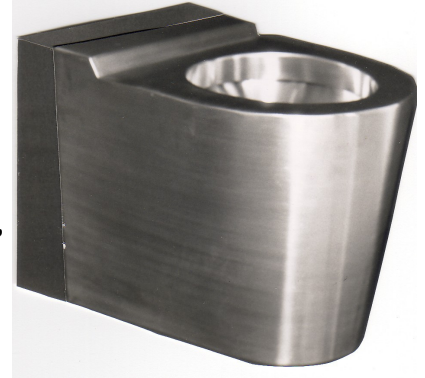
MODEL NO: STTS
PRODUCT CODE: TP2002

Full flush open rim type 304 satin finish stainless steel water closet pan, with 40mm keeseal rear entry flushpipe operation .

Featuring:

Mid or high level operation.
 Extra body strength; generally 2mm thick.
 Vandal resistance. Particularly suited for installation in such vandal prone situations as prisons, hospitals, institutions and public conveniences.

For disabled use add 50mm to all vertical Dimensions. TP2006—DISABLED “S” TRAP



WELS registration number L03330

Fix securing bracket to floor with two off 10mm OD counter sunk d.d. dynabolts as indicated in central position, slide pan on to bracket seal to wall and floor as required.



STANDARDS AUSTRALIA
 LIC. 0585
 PAN CAP. 6L/3L
 MATCHING CISTERN
 WATER WAFER
 DUAL FLUSH

DRAWING NO: SC3
 09/13

SOUTHERN CROSS
 LASER & SHEET METAL

23-27 Clapham Road
Regents Park NSW 2143

Ph: 02 9644 2811
 Email office@sclaser.org