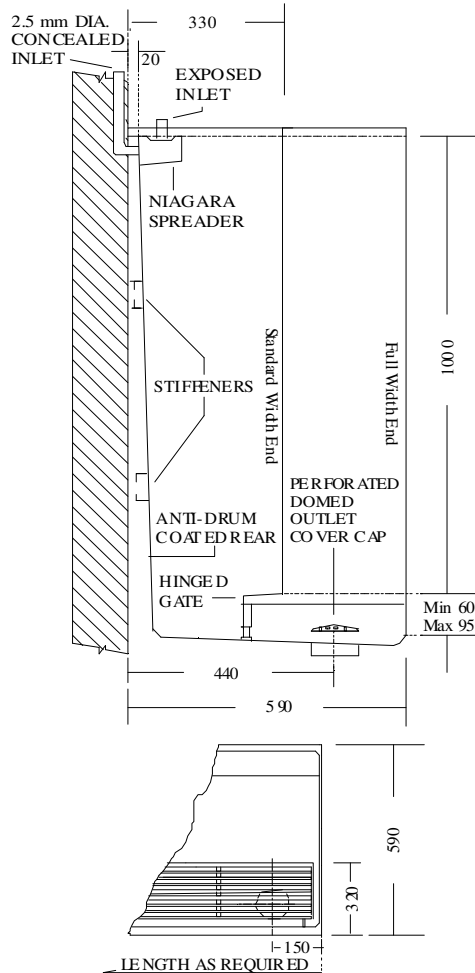


# WIDE TROUGH FLUSHING STEP SLAB URINAL STALL

**MODEL NO: STUR-WT**

Length mms x 1000mm high x 1.2mm grade 304 satin finish stainless steel with niagra spreader. Concealed (or) exposed inlet. 50 or 100mm outlet. Standard (half) or full width ends.



- Standard stock lengths from 600mm to 2400mm long
- Special lengths and configurations made to order.
- Top exposed or rear concealed supply units
- Joining strips available for continuous lengths
- Site joining by welding and polishing if required.
- Exposed end panels if required



  
**SOUTHERN CROSS**  
 LASER & SHEET METAL

**23-27 Clapham Road**  
**Regents Park NSW 2143**

**Ph: 02 9644 2811**  
**Email [office@sclaser.org](mailto:office@sclaser.org)**

**DRAWING NO: SC29**  
09/13

WELS registration number  
U00220