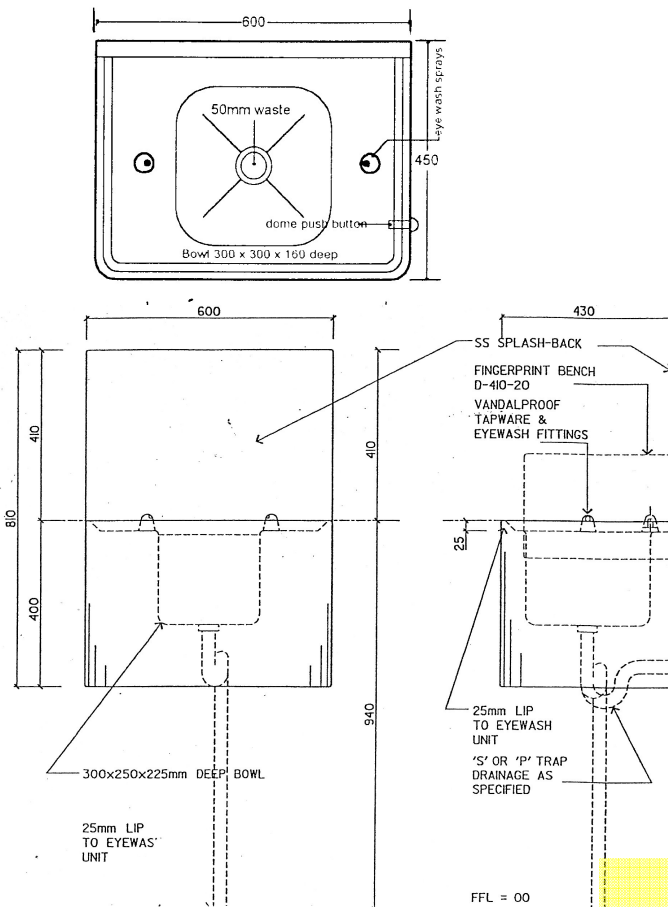


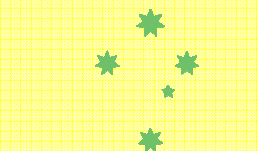
SAFETY EYE WASH DETENTION WALL MOUNTED TYPE

MODEL NO: EW-D
 PRODUCT CODE: EW1001

The safety eye wash has been designed for use in detention areas such as Police Stations, Prisons, court Houses etc. The unit is manufactured from heavy guage stainless steel with rounded corners for safety and complete with plumbing fittings ready for installation.



- Push Button operation
- Domed safety outlet spouts.
- Deep anti-spill rim to perimeter
- 410mm high splashback
- 250mm front & end apron.
- Concealed fixing brackets



SOUTHERN CROSS
 LASER & SHEET METAL

23-27 Clapham Road
Regents Park NSW 2143

Ph: 02 9644 2811
 Email office@scslaser.org