

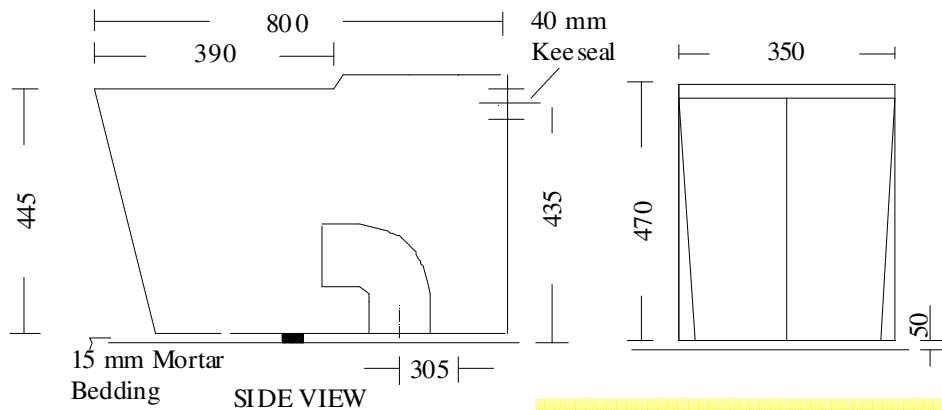
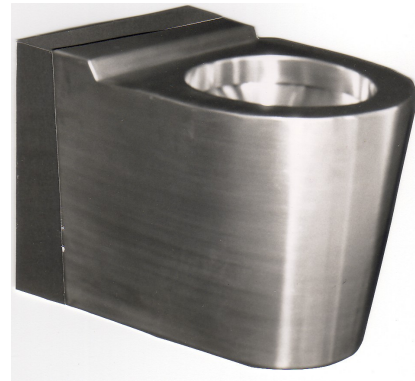
DISABLED WALLFACE STRAP PAN

MODEL NO: STTS
PRODUCT CODE: TP2006

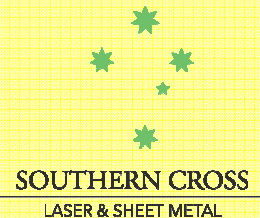
Full flush open rim type 304 satin finish stainless steel water closet pan, with 40mm keeseal rear entry flushpipe operation .

Featuring:

Mid or high level operation.
Extra body strength; generally 2mm thick.
Vandal resistance. Particularly suited for installation in such vandal prone situations as prisons, hospitals, institutions and public conveniences.



STANDARDS AUSTRALIA
LIC. 0585
PAN CAP. 6L/3L
MATCHING CISTERN
WATER WAFER
DUAL FLUSH



**23-27 Clapham Road
Regents Park NSW 2143**

Ph: 02 9644 2811
Email office@sclaser.org