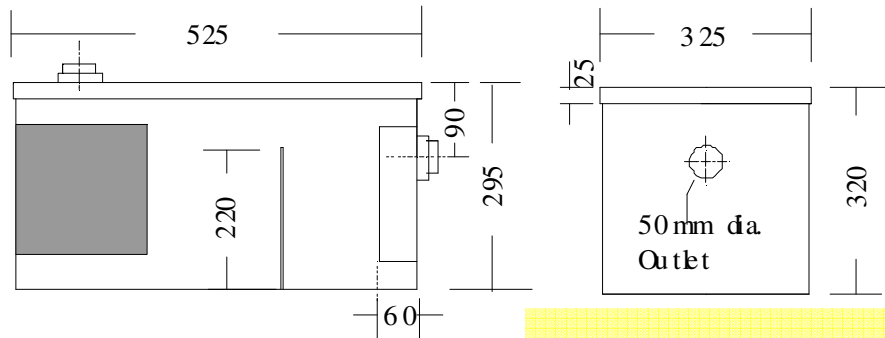
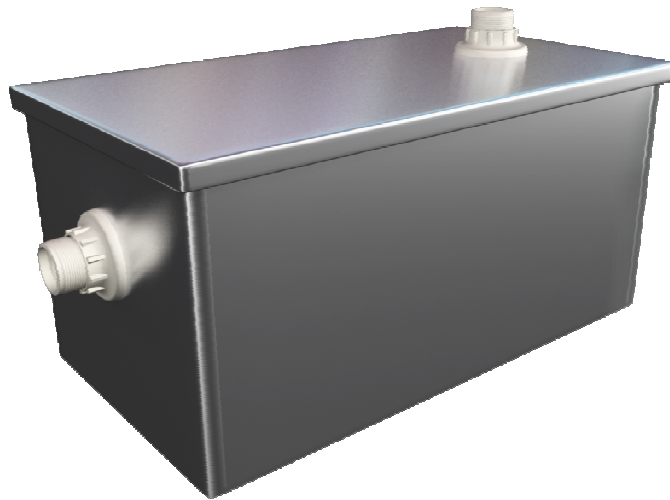


CLAY ARRESTOR

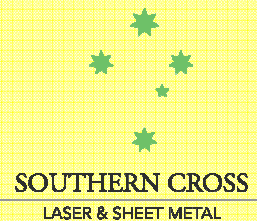
MODEL NO: STCA
PRODUCT CODE: CAI800

625 x 325 x 320mm high 1.2mm gauge, type 304 satin finish stainless steel outer case, 50mm diameter brass waste inlet and outlet connections. Removable lid and perforated stainless steel strainer basket.

35 litre capacity . Recommended for industrial and commercial use.



- 304 grade stainless steel
- 1.2mm thick
- Removable lid & basket
- 35 litre capacity
- Easy to maintain



**23-27 Clapham Road
Regents Park NSW 2143**

Ph: 02 9644 2811
Email office@sclaser.org